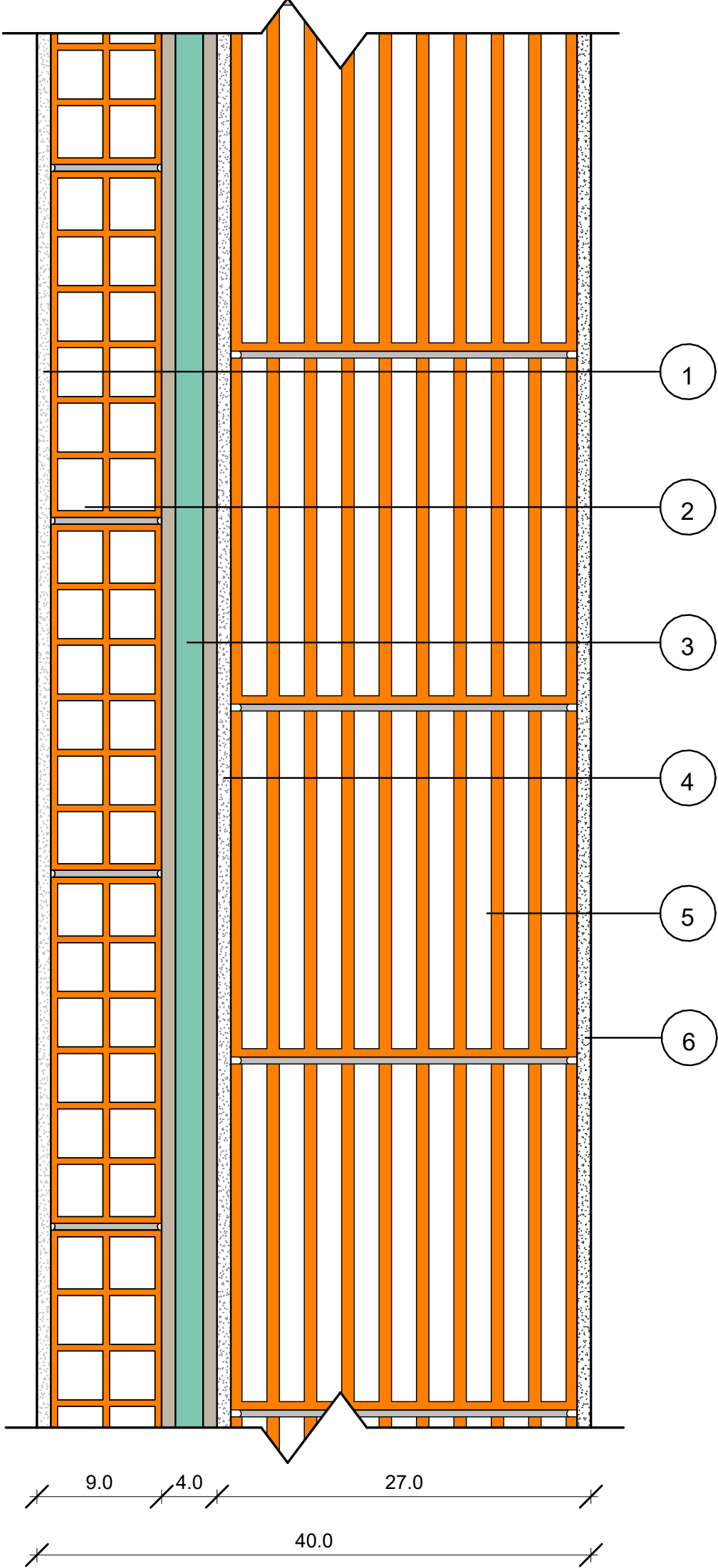




ISOLAMENTO ACUSTICO PARTIZIONI

SEZIONE VERTICALE\_ SCALA 1:5



**$R_w = 58 \text{ dB}$**

STRATIGRAFIA PARETE

- |   |                          |
|---|--------------------------|
| 1 | Intonaco sp. 1 cm        |
| 2 | Tramezzo sp. 8 cm        |
| 3 | BIWOOD sp. 40 mm         |
| 4 | Rinzafo sp. 1 cm         |
| 5 | Blocco Poroton sp. 25 cm |
| 6 | Intonaco sp. 1 cm        |