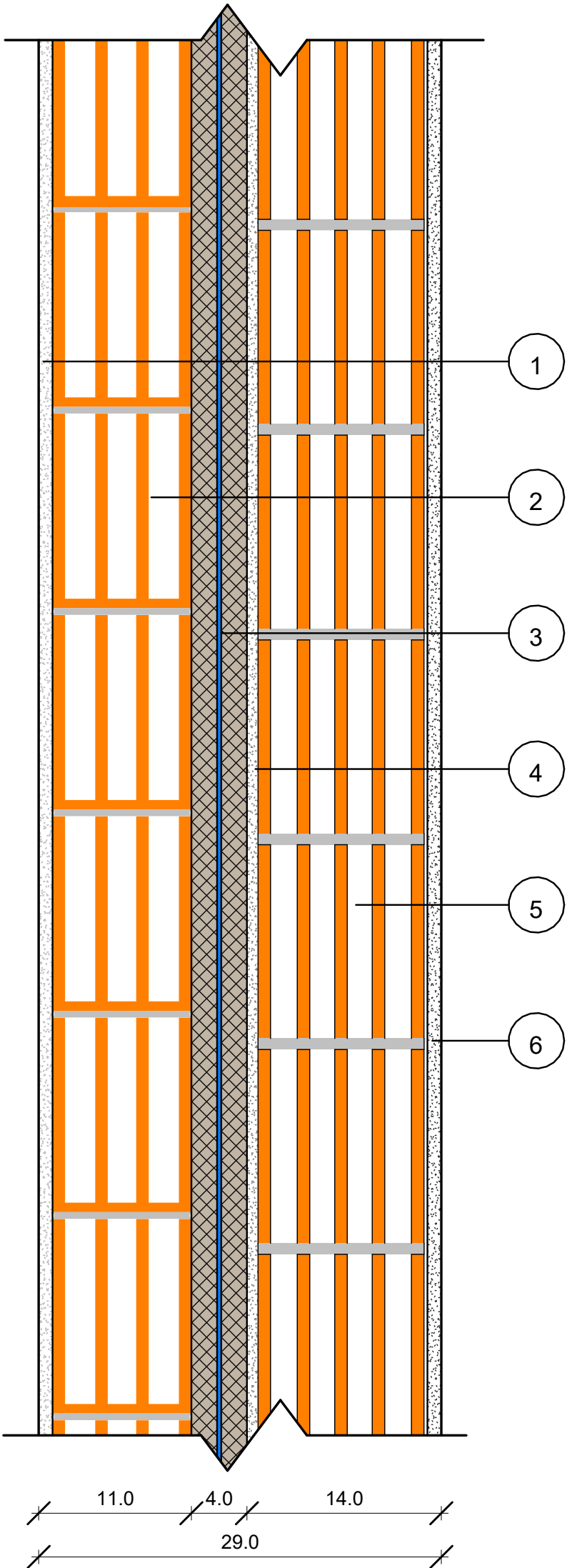




ISOLAMENTO ACUSTICO PARTIZIONI

SEZIONE VERTICALE_ SCALA 1:5



$R_w = 59 \text{ dB}$

STRATIGRAFIA PARETE

- | | |
|---|--------------------------|
| 1 | Intonaco sp. 1 cm |
| 2 | Blocco Poroton sp. 10 cm |
| 3 | ACOUSTICBAG sp. 40 mm |
| 4 | Rinzaffo sp. 1 cm |
| 5 | Blocco Poroton sp. 12 cm |
| 6 | Intonaco sp. 1 cm |